



Superbright 2835 SMD Strip

-Double Rows

WWW/R/G/B

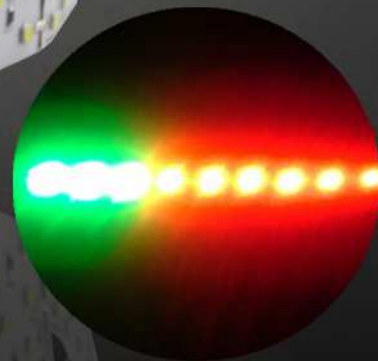
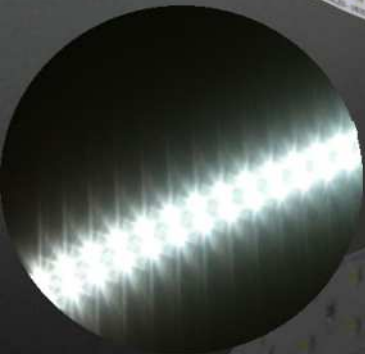
EPISTAR

2835SMD

3 Year Warranty



IP 20





※ **Feature**

Great light source

Super 0.2W 2835 SMD LED strip light, top quality Epistar chip 3528 SMD LEDs are used as light sources, with high lumen LEDs 22-24lm for each LEDs which make the whole strip with high brightness.

Double-faced soft FPC

GLU LED Strip light use high tech. double-faced FPC with thicker copper layer, which ensure the good electrical conductivity and lower voltage drop, however for many other suppliers they use single faced soft PCB.

Flexible in length suitable for different applications

GLU LED strip light, the standard length is 5 meters/reel, but we can offer different length strip, such as 1meter, 2meters, 3meters, 4meters etc. suitable for different applications.

Both white and copper PCB available

For GLU LED strip we offer both white and copper PCB with same price to satisfy the different taste from different consumer.

Different colors for choice for different applications

GLU 2835 LED strip, we offer cold white, natural white, warm white, Red, Green, Blue for different applications.

Environmental friendly

GLU LED strips are complied with CE and RoHS standard without harmful substance, such as lead or Mercury etc.

3 Years warranty

GLU LED strips are use good materials and super light sources with low lumens depreciation, which make the strips with long life-span over 80, 000 hours, and we offer 3 years warranty.

※ Technique Data

Absolute Maximum Rating at TA=25°C

Parameter	Symbol	Absolute Maximum Rating		Unit
Forward Current	IF	2400	2400/1200	mA
Forward Voltage	VF	DC12V	DC24V	V
CRI	Ra	Ra>70/Ra>80		--
Electrostatic discharge	ESD	400		V
Operating Temperature	Topr	-25~+60		°C
Storage Temperature	Tstg	-40~+80		°C

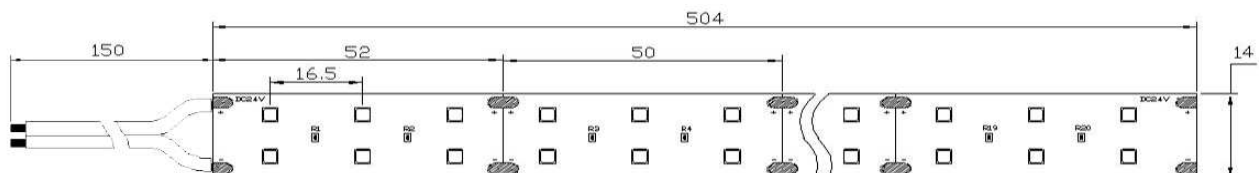
Electrical / Optical Characteristics at TA=25°C

Part No.	Color	CCT/WLD	Lumen Flux	Working Voltage	Current	Power	View Angle
FMN-W-120	White	6000-7000K	2280lm	DC12V	2.4A	28.8W	120°
FMN-WW-120	Warm white	2800-3200k	2100lm				
FMN-R-120	Red	620-630nm	660lm				
FMN-G-120	Green	515-530nm	1260lm				
FMN-B-120	Blue	455-470nm	480lm				
FMN-W-168	White	6000-7000K	3260lm	DC24V	1.68A	40.32W	120°
FMN-WW-168	Warm white	2800-3200k	3160lm				
FMN-R-168	Red	620-630nm	930lm				
FMN-G-168	Green	515-530nm	1780lm				
FMN-B-168	Blue	455-470nm	670lm				

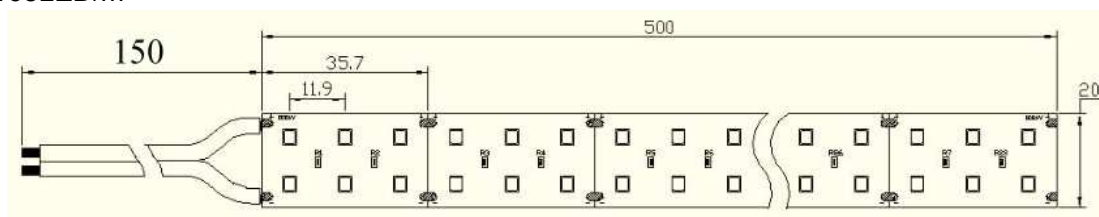
- Note: 1. The lumen flux tolerance is $\pm 5\%$;
 2. The data above is based on 1 meters;
 3. Test Temperature (Ambient temperature: TA=25°C)

※ Dimension

120LED/m



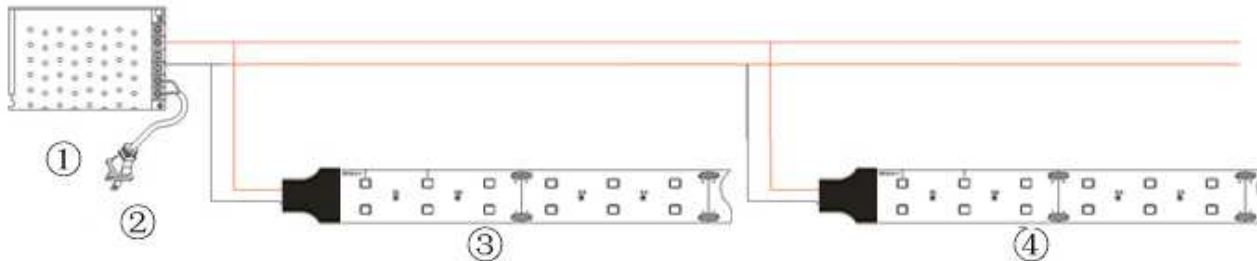
168LED/m



Notes:

1. All dimension units are millimeters.
2. All dimension tolerance is $\pm 0.5\text{mm}$ unless otherwise noted.

※ Connection Diagram



- ① LED Power Supply
- ② Power Cord, for AC input
- ③④ LED Strip, connected to output terminal, white -, white(gray)+

Notes:

1. **The strip must be installed in a ventilated place with good heat dissipation.**
2. 12V and 24V available, please choose suitable power supply, power of power supply 20% higher than strip loaded is recommend;
3. Parallel connection is highly recommended, at most 8-10meter for series connection.

※ Application

For Flexible Strips, they can be used as edge light, cove light, furniture light, sign light, backlighting for AdWords, lighting box etc., and widely used as decorative lighting for building outline, sidestep, exhibition stand, hotel, KTV, club etc. And also DIY Light for household use.





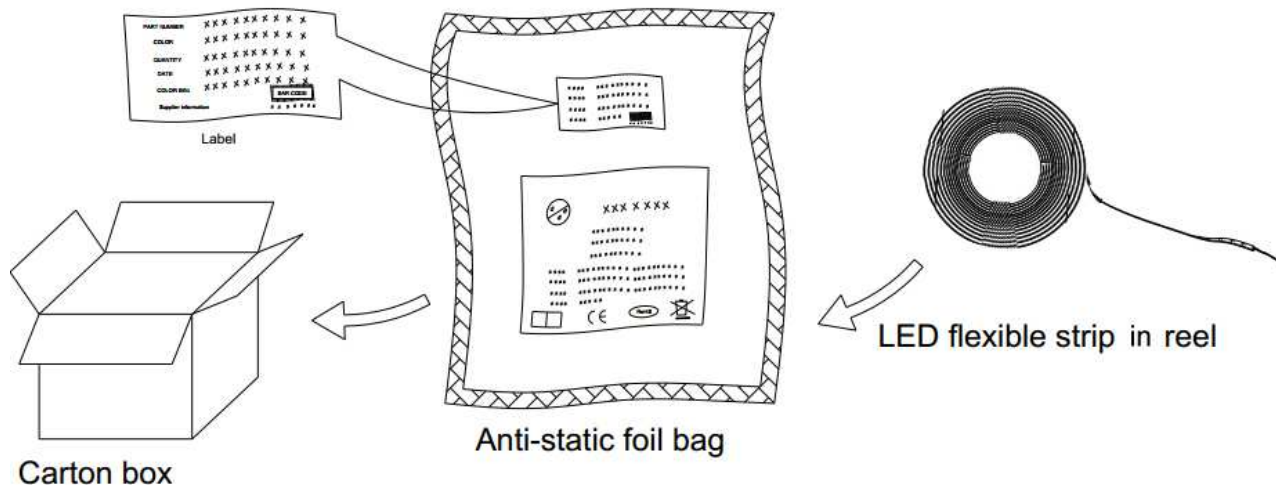
※ Safety Information

- The SMD light ribbon itself and all its components may not be mechanically stressed. Assembly must not damage or destroy conducting paths on the circuit board.
- Installation of LED light ribbon (with power supplies) needs to be comply with all applicable electrical and safety standards. Only qualified personnel should be allowed to perform installations. Correct electrical polarity needs to be observed. Wrong polarity may destroy the ribbon.
- Parallel connection is highly recommended as safe electrical operation mode.
- Serial connection is not recommended. Unbalanced voltage drop can cause hazardous overload and damage the ribbon.
- Please ensure that the power supply is of adequate power to operate the total load.
- When mounting on metallic or otherwise conductive surfaces, there needs to be an electrical insulated points between ribbon and the mounting surface.
- Please pay attention to standard ESD precautions when installing the ribbon.
- Damaged by corrosion will not be honored as a materials defect claim. It is the user's responsibility to provide suitable protection against corrosive agents such as moisture and condensation and other harmful elements.
- The strip must installed in a place with good heat dissipation condition. Do never installed the strip impending or on wooden.





※ Packing Information



※ Contact Information

Company Name: Shenzhen GLU Lighting Co., Ltd.

Add.:4F, Bldg. K, Zhixuanhan Industrial Area, Yuanling Community, Shiyan Town,
Bao'an District, Shenzhen, P.R. China 518108

Tel:+86-755-23708101/23708103

Fax:+86-755-29236521

E-mail: sales@glu-light.com

<http://www.glu-light.com>

<http://glu-light.en.alibaba.com/>

Skype: glu-light.com

MSN: sales@glu-light.com

ICQ: victor@glu-light.com

